

F²MC-16FX FAMILY
16-BIT MICROCONTROLLER
ALL SERIES

**RESTRICTIONS AND
LIMITATIONS OF USAGE OF
EUROSCOPE LITE V3.0**

CUSTOMER INFORMATION

Revision History

Date	Issue
2008-02-18	V1.0; 1 st version; MWi, RLa

This document contains 12 pages.

Warranty and Disclaimer

To the maximum extent permitted by applicable law, Fujitsu Microelectronics Europe GmbH restricts its warranties and its liability for **all products delivered free of charge** (e.g. software include or header files, application examples, target boards, evaluation boards, engineering samples of IC's etc.), its performance and any consequential damages, on the use of the Product in accordance with (i) the terms of the License Agreement and the Sale and Purchase Agreement under which agreements the Product has been delivered, (ii) the technical descriptions and (iii) all accompanying written materials. In addition, to the maximum extent permitted by applicable law, Fujitsu Microelectronics Europe GmbH disclaims all warranties and liabilities for the performance of the Product and any consequential damages in cases of unauthorized decompiling and/or reverse engineering and/or disassembling. **Note all these products are intended and must only be used in an evaluation laboratory environment.**

1. Fujitsu Microelectronics Europe GmbH warrants that the Product will perform substantially in accordance with the accompanying written materials for a period of 90 days from the date of receipt by the customer. Concerning the hardware components of the Product, Fujitsu Microelectronics Europe GmbH warrants that the Product will be free from defects in material and workmanship under use and service as specified in the accompanying written materials for a duration of 1 year from the date of receipt by the customer.
2. Should a Product turn out to be defect, Fujitsu Microelectronics Europe GmbH's entire liability and the customer's exclusive remedy shall be, at Fujitsu Microelectronics Europe GmbH's sole discretion, either return of the purchase price and the license fee, or replacement of the Product or parts thereof, if the Product is returned to Fujitsu Microelectronics Europe GmbH in original packing and without further defects resulting from the customer's use or the transport. However, this warranty is excluded if the defect has resulted from an accident not attributable to Fujitsu Microelectronics Europe GmbH, or abuse or misapplication attributable to the customer or any other third party not relating to Fujitsu Microelectronics Europe GmbH.
3. To the maximum extent permitted by applicable law Fujitsu Microelectronics Europe GmbH disclaims all other warranties, whether expressed or implied, in particular, but not limited to, warranties of merchantability and fitness for a particular purpose for which the Product is not designated.
4. To the maximum extent permitted by applicable law, Fujitsu Microelectronics Europe GmbH's and its suppliers' liability is restricted to intention and gross negligence.

NO LIABILITY FOR CONSEQUENTIAL DAMAGES

To the maximum extent permitted by applicable law, in no event shall Fujitsu Microelectronics Europe GmbH and its suppliers be liable for any damages whatsoever (including but without limitation, consequential and/or indirect damages for personal injury, assets of substantial value, loss of profits, interruption of business operation, loss of information, or any other monetary or pecuniary loss) arising from the use of the Product.

Should one of the above stipulations be or become invalid and/or unenforceable, the remaining stipulations shall stay in full effect

Contents

REVISION HISTORY	2
WARRANTY AND DISCLAIMER	3
CONTENTS	4
0 INTRODUCTION	5
1 COM PORT RECOGNITION	6
1.1 COM Port Number	6
1.2 COM Port Number Gaps	6
1.3 Changing COM Port Number	6
2 RANGE BREAK	7
2.1 Data Range Break Functionality	7
2.2 Code Range Break Functionality	7
3 MULTIPLE SAME-VARIABLE WATCH	8
3.1 Watch Window Usage	8
4 MISSING VARIABLE VALUE AND ADDRESS	9
4.1 Local and Watch View	9
5 SINGLE STEP FOCUS	10
5.1 Single Step in Disassembly and Source View	10
6 FLASHING PROCEDURE	11
6.1 Warranty Restrictions	11
7 REGISTER BANK	12
7.1 Register Bank RAM	12

0 Introduction

This customer information describes the restrictions and limitations of using *EUROScope LITE* debugger version 3.0.

1 COM Port Recognition

RESTRICTIONS OF COM PORT

1.1 COM Port Number

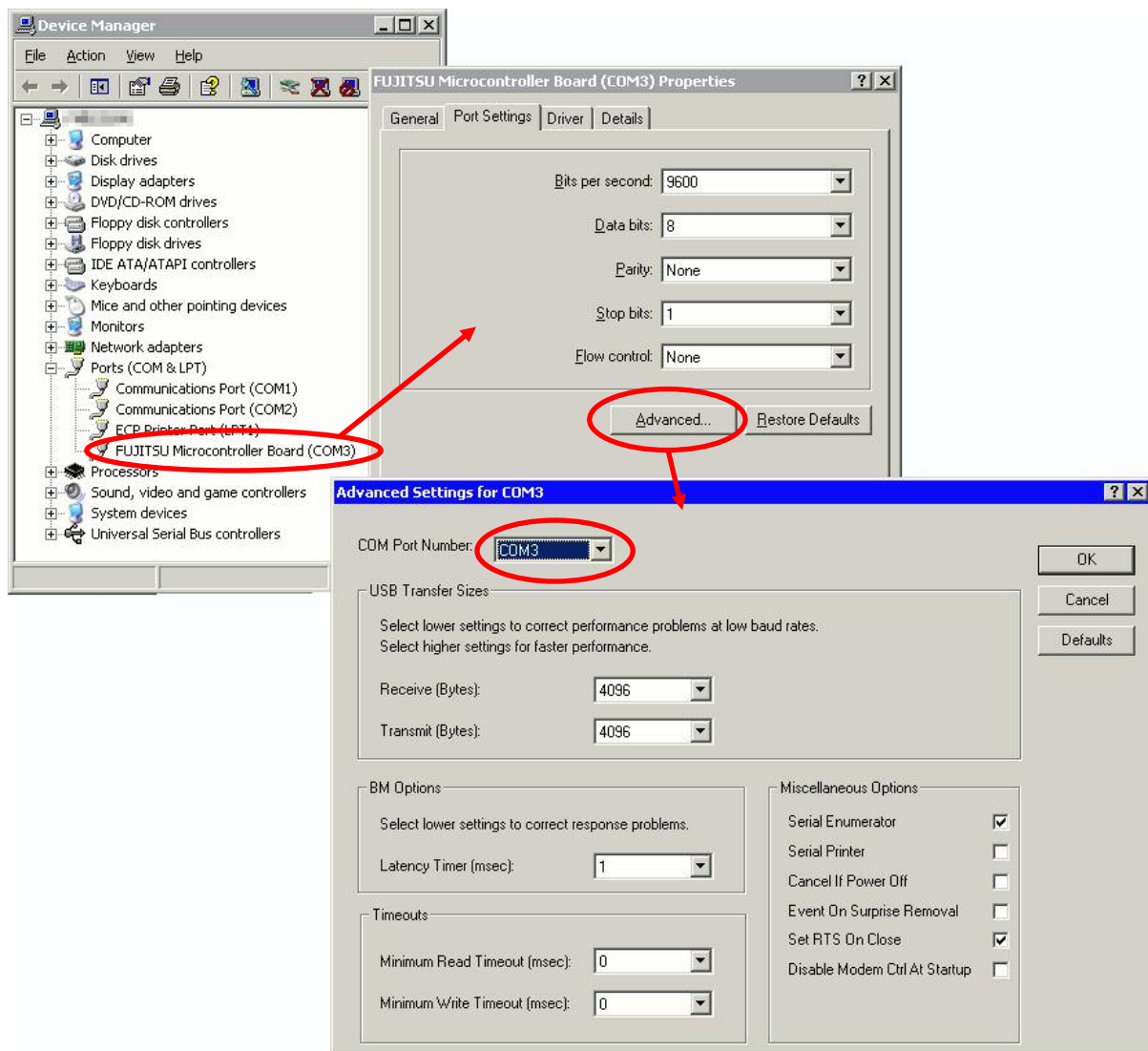
The number of COM ports, which are supported by EUROScope is limited to 9. If a virtual COM port uses a number higher than 9, the user has to choose a lower number. This can be done using the device manager.

1.2 COM Port Number Gaps

When the Windows™ system has gaps in the COM port numbers, EUROScope may not recognize a COM port behind a gap. In this case the user has to use the device manager to set the COM to a lower number.

1.3 Changing COM Port Number

The following screen shots show how to change a COM port number starting with the device manager (upper left):



2 Range Break

RANGE BREAK RESTRICTION

2.1 Data Range Break Functionality

When using data range break run mode is not possible after break condition.

Workaround: Use single step or disable data range break

2.2 Code Range Break Functionality

When using code range break neither run mode nor single stepping is possible after break condition.

Workaround: Disable code range break.

3 Multiple Same-Variable Watch

UNDEFINED BEHAVIOR WHEN USING SAME VARIABLE MORE THAN ONE TIME

3.1 Watch Window Usage

It is possible to add the same (global and local) variable to the watch window. As a result EUROScope may behave not properly when saving the user configuration and reloading it.

Workaround: Do not use a variable more than one time in the watch view.

4 Missing Variable Value and Address

SOMETIMES VARIABLE VALUE AND ADDRESS IS NOT SHOWN

4.1 Local and Watch View

Sometimes the values and storage address of variables are missing in the watch and local variable view after starting a debug session.

Workaround: Save and reload user configuration.

5 Single Step Focus

BEHAVIOR OF SINGLE STEPPING WHEN CHANGING WINDOWS APPLICATION

5.1 Single Step in Disassembly and Source View

It is possible to use single stepping in the disassembly and source code view. The first steps per CPU instruction the second per source code instruction.

When stepping in the disassembly window, changing the windows application focus and returning to EUROScope the single stepping changes back to source code stepping although the actual disassembly line is marked blue.

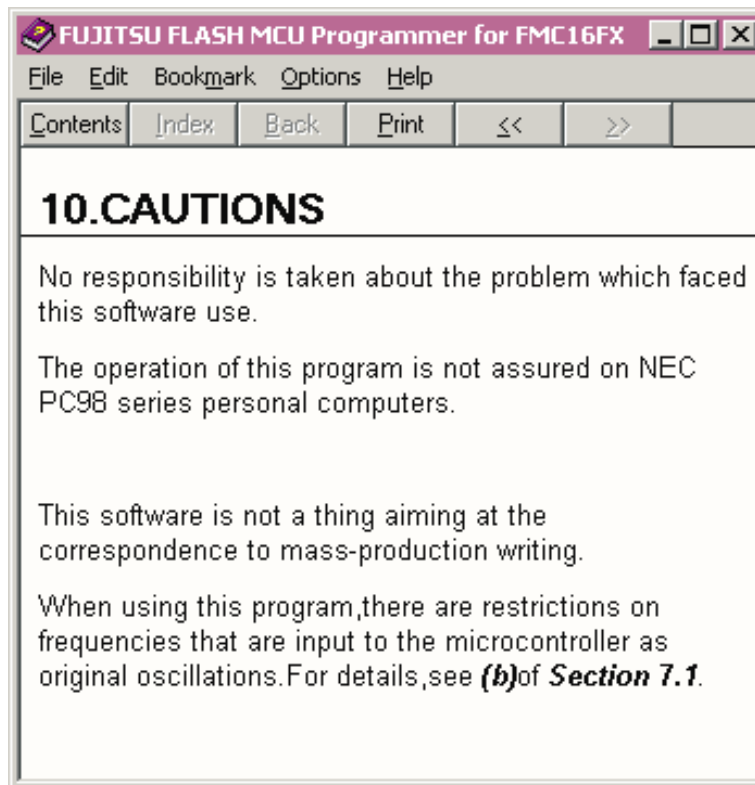
Workaround: Click to the disassembly line again and continue CPU instruction stepping.

6 Flashing Procedure

REUSE OF FUJITSU FLASH PROGRAMMER KERNELS

6.1 Warranty Restrictions

Because EUROScope uses the Fujitsu 16FX Flash programmer kernels there is no warranty as stated in chapter 10 of the programmer's help file:



7 Register Bank

REGISTER BANK RESTRICTIONS

7.1 Register Bank RAM

Do not link global variables to register bank RAM area, because the contents are displayed wrong in the watch and memory window.

No workaround possible.